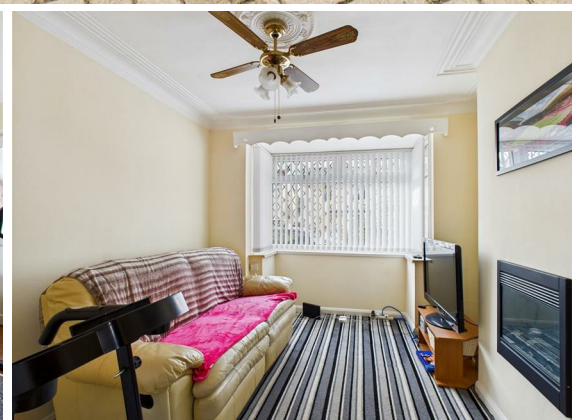




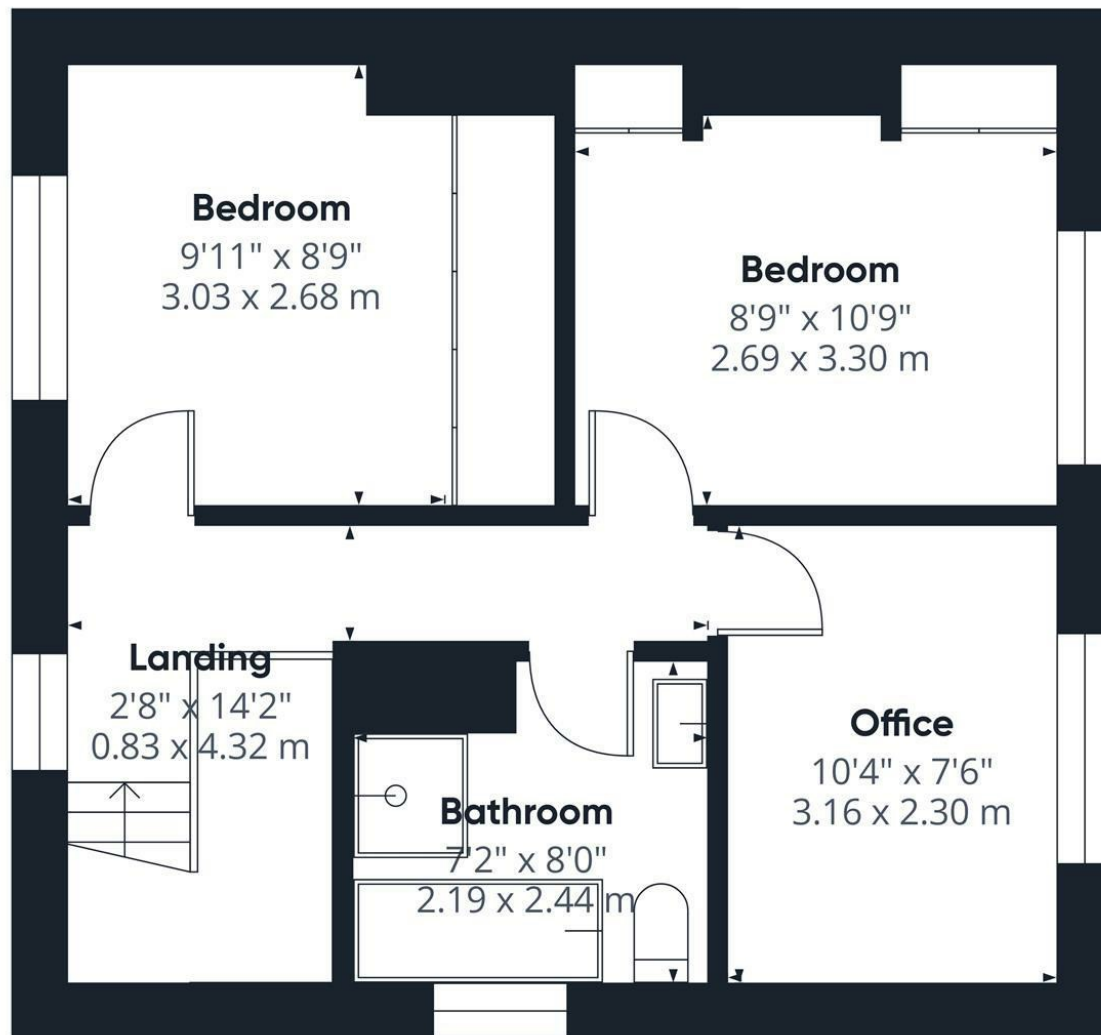
3 Bed  
House - Semi-  
Detached  
located in Skellow

Guide Price £150,000



**LOGIC**  
REAL ESTATE





Floor 1

**Approximate total area<sup>(1)</sup>**

390 ft<sup>2</sup>  
36.3 m<sup>2</sup>

(1) Excluding balconies and terraces

Calculations reference the RICS IPMS 3C standard. Measurements are approximate and not to scale. This floor plan is intended for illustration only.

GIRAFFE360

**DIRECTIONS**

**CONTACT**

148 Southgate  
Pontefract  
West Yorkshire  
WF8 1QT

E: [info@logicrealestate.co.uk](mailto:info@logicrealestate.co.uk)  
T: 01977 700595

