



3 Bed
House - Semi-
Detached
located in
Pontefract
Offers Over £240,000



Pear Tree Close
Pontefract
WF8 4RL

****NEW**NO ONWARD CHAIN**LOVELY SEMI-DETACHED HOME IN A SOUGHT AFTER LOCATION AT THE SOUTH SIDE OF PONTEFRACT****

Lead In

This charming semi-detached home combines comfort, space, and practicality, making it an excellent choice for families or anyone looking for additional room to grow. The property features three well-sized bedrooms and a welcoming reception room, creating a cosy and inviting setting for both relaxing and entertaining.

The ground floor comprises a spacious lounge/dining area alongside a fitted kitchen, while the first floor offers three bedrooms and a family bathroom.

Externally, the property is accessed via a paved pathway and a gravelled driveway, providing an attractive, low-maintenance frontage. A lawned garden with established shrubs adds greenery to the front aspect, while boundary walls and fencing enhance privacy and definition. Timber gates lead to a wide side pathway, giving access to a detached single garage.

To the rear, there is a generously proportioned garden, mainly laid to lawn, offering plenty of space for outdoor living, family activities, or future landscaping projects. Enclosed by timber fencing, the garden provides a private and secure environment for children and pets, with excellent potential to create a patio, entertaining space, or peaceful garden retreat.

Positioned within a pleasant cul-de-sac, the property enjoys convenient access to local amenities, schools, parks, and excellent transport connections, making it particularly appealing to both commuters and families.

Hallway

5'10" x 11'4"

Wood effect flooring. Central heated radiator. Access to the living room and kitchen.

Living Room Diner

12'2" x 21'12"

Carpeted throughout. Central heated radiator. Dual aspect UPVC double glazed window to the front and rear.

Kitchen

8'7" x 10'1"

Range of high and low level kitchen units with laminate work tops. Integrated oven with five ring hob and stainless steel extractor hood over. One and a half bowl chrome sink with drainer and chrome mixer tap over. Access to pantry cupboard. UPVC side door access to the rear garden. Wood effect flooring. UPVC double glazed window to the rear exterior.

Landing

5'7" x 8'6"

Carpeted throughout. UPVC double glazed window to the side elevation.

Main Bedroom

10'2" x 12'1"

Carpeted throughout. Central heated radiator. UPVC double glazed window to the front elevation.

Bedroom Two

10' x 9'7"

Wood effect flooring. Central heated radiator. UPVC double glazed window to the rear elevation.

Bedroom Three

8'2" x 7'6"

Wood effect flooring. Central heated radiator. UPVC double glazed window to the front exterior.

Bathroom

8'3" x 5'6"

White suite comprising of panel bath with chrome mixer tap over and mains feed shower with half shower screen. Wash hand basin with chrome mixer tap. WC with low level flush. Complimentary





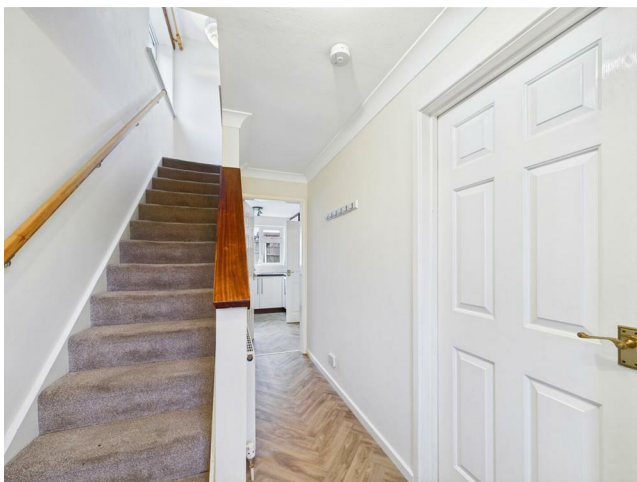
tiles to the wall. Chrome central heated towel rail. Dual aspect UPVC frosted double glazed window to the side and front elevation.

External

The property is approached via a low-maintenance driveway incorporating gravelled sections and paved pathways, providing off-street parking. A lawned front garden with established shrubs adds an attractive touch of greenery, while gated side access leads through to the rear garden and detached garage. Boundary walls and fencing offer additional privacy and definition.

To the rear, the property enjoys a generously sized enclosed garden, predominantly laid to lawn, offering excellent potential for outdoor entertaining, family use, or future landscaping.

These particulars are prepared in good faith and in accordance with current consumer protection legislation, using information provided by the vendor. Whilst we take reasonable steps to ensure that the details are accurate and not misleading, we have not independently verified all information and cannot guarantee its completeness or accuracy. The particulars are intended as a general guide only and do not constitute part of an offer or contract. All descriptions, measurements, references to condition, services, tenure, planning matters, and other material information should be independently verified by prospective purchasers through inspection, survey, and appropriate professional enquiries.





Floor 0

Approximate total area⁽¹⁾
 397 ft²
 36.9 m²

(1) Excluding balconies and terraces

Calculations reference the RICS IPMS 3C standard. Measurements are approximate and not to scale. This floor plan is intended for illustration only.

GIRAFFE360

CONTACT

30 Newgate
 Pontefract
 West Yorkshire
 WF8 1DB

E: info@logicrealestate.co.uk
 T: 01977 700595

